





TOGETHER

WE SUPPORT OUR CRITICAL WORKERS

Every day, the world's tradespeople are stepping up. Doing the work that needs to be done, in difficult and unpredictable times. So that life can feel as normal as possible for the rest of us.

They don't ask for recognition. They work hard and without complaint. They are modern-day heroes, and we remain grateful for their dedication and sacrifice.

To honor every worker who keeps our world running, Red Wing Shoes continues to evolve and innovate. So that you can continue to keep your customers a critical step ahead of what their jobs require of them.



CSA BRAND FAMILIES AND THEIR CONSTRUCTION CATEGORIES

TABLE OF CONTENTS

RED WING FOOTWEAR

Zero-G Lite	pgs. 4-5
Exos Lite	pg. 6
TruHiker	pg. 7
ShieldLite Athletics	pg. 8
Tradesman	pgs. 9-10
Tradeswoman	pg. 11
King Toe® ADC	pg. 12
King Toe®	pgs. 13-14
Burnside	pg. 15
BRNR XP	pgs. 16-17
SuperSole® 2.0	pgs. 18-19
Traction Tred Lite	pg. 20

WORX FOOTWEAR

Zinc	pg. 21
Taconite	pg. 22
Gravel	pg. 22

IRISH SETTER FOOTWEAR

Wingshooter ST	pg. 23
Kasota	pg. 24
Crosby	pgs. 25-26

REFERENCE PAGES

Care Information	pgs. 27-29
Full Line	pgs. 30-32
Technology Reference	pgs. 33-37
Ordering Info	pg. 38
Rep Map	pg. 39
Index	pg. 39

RED WING

CEMENT CONSTRUCTION



NEW ZERO-G LITE

An incredibly lightweight premium safety toe shoe with work boot performance

PAGE 4



EXOS LITE

Exceptional performance, comfort and protection from Red Wing's lightest work boot

PAGE 6



TRUHIKER

Durability, comfort, ankle-high support

PAGE 7



NEW SHIELDLITE ATHLETICS

Fast like training shoes, but tough like work shoes

PAGE 8



TRADESMAN

Hiker-inspired design with improved fit and superior slip-resistance

PAGE 9



TRADESWOMAN

Versatile hiker-inspired performance for women

PAGE 11



KING TOE® ADC

Premium all-day comfort, extra toe room

PAGE 12



KING TOE®

Flexible and comfortable, extra toe room

PAGE 13

DIRECT ATTACH CONSTRUCTION

RED WING

DIRECT ATTACH TO WELT CONSTRUCTION



BURNSIDE

Premium comfort and heavy-duty performance

PAGE 15



BRNR XP

Advanced protection and slip resistance

PAGE 16



SUPERSOLE® 2.0

Cushioned comfort, long-lasting outsole

PAGE 18

WELT CONSTRUCTION



NEW TRACTION TRED LITE

A lightweight version of the classic work boot

PAGE 20

WORX

CEMENT CONSTRUCTION



ZINC SERIES

Casual inspired work footwear

PAGE 21



TACONITE SERIES

Heavy-duty metatarsal protection

PAGE 22



GRAVEL SERIES

Heavy-duty work footwear

PAGE 22

WELT CONSTRUCTION

IRISH SETTER

WELT CONSTRUCTION



WINGSHOOTER ST

Versatile work boots with iconic style

PAGE 23

DIRECT ATTACH CONSTRUCTION



NEW KASOTA

Versatile work boots with trend-right designs and colors

PAGE 24

CEMENT TO WELT CONSTRUCTION



CROSBY

Stability in the heel and flexible in the forefoot

PAGE 25



ZERO-G LITE FAMILY

An incredibly lightweight premium safety toe shoe with work boot performance.

- Great for indoor jobs including supervisors, warehousing, distribution, service and light manufacturing.



NEW ZERO-G LITE Men's Oxford
3558 **AT** **PR** **EH**

UPPER: Full Grain Leather
FOOTBED: Fabric Covered EVA
LAST: 312
CONSTRUCTION: Cement
CARE: Kit 5 - Foam Cleaner, Leather Cream, Leather Protector
RATING: ASTM F2413-18, M/I/C, EH PR, CSA Grade 1, ESR Rated, PR
SIZES: D 6-12,13,14,15 EE 6-12,13,14,15 H 8-12,13



SOLE RESISTANCE CHART

X-Lite+

Slip	Best
Oil/Gas	Best
Chemicals	Best
Abrasions	Better
Heat	Good
Non-Marking	Yes



MADE IN VIETNAM



NEW ZERO-G LITE Men's Oxford
3559 **AT** **PR** **EH**

UPPER: Full Grain Leather
FOOTBED: Fabric Covered EVA
LAST: 312
CONSTRUCTION: Cement
CARE: Kit 5 - Foam Cleaner, Leather Cream, Leather Protector
RATING: ASTM F2413-18, M/I/C, EH PR, CSA Grade 1, ESR Rated, PR
SIZES: D 6-12,13,14,15 EE 6-12,13,14,15 H 8-12,13



SOLE RESISTANCE CHART

X-Lite+

Slip	Best
Oil/Gas	Best
Chemicals	Best
Abrasions	Better
Heat	Good
Non-Marking	Yes



MADE IN VIETNAM

ST Steel Toe
Embout en acier

AT Aluminum Toe
Embout en aluminium

NT Non-Metallic Toe
Embout non métallique

Waterproof
Imperméable

Insulated
Isolé



NEW

ZERO-G LITE Men's Chukka

3556 AT PR EH

UPPER: Full Grain Leather

FOOTBED: Fabric Covered EVA

LAST: 312

CONSTRUCTION: Cement

CARE: Kit 5 - Foam Cleaner, Leather Cream, Leather Protector

RATING: ASTM F2413-18, M/I/C, EH PR, CSA Grade 1, ESR Rated, PR

SIZES: D 6-12,13,14,15 EE 6-12,13,14,15 H 8-12,13



SWEN-FLEX®



EXTRALIGHT™

SOLE RESISTANCE CHART

X-Lite+

Slip	Best
Oil/Gas	Best
Chemicals	Best
Abrasions	Better
Heat	Good
Non-Marking	Yes



MADE IN VIETNAM

NEW

ZERO-G LITE Men's Chukka

3557 AT PR EH

UPPER: Full Grain Leather

FOOTBED: Fabric Covered EVA

LAST: 312

CONSTRUCTION: Cement

CARE: Kit 5 - Foam Cleaner, Leather Cream, Leather Protector

RATING: ASTM F2413-18, M/I/C, EH PR, CSA Grade 1, ESR Rated, PR

SIZES: D 6-12,13,14,15 EE 6-12,13,14,15 H 8-12,13



SWEN-FLEX®



EXTRALIGHT™

SOLE RESISTANCE CHART

X-Lite+

Slip	Best
Oil/Gas	Best
Chemicals	Best
Abrasions	Better
Heat	Good
Non-Marking	Yes



MADE IN VIETNAM

NEW

ZERO-G LITE Women's Slip-On

3562 AT PR EH

UPPER: Full Grain Leather

FOOTBED: Fabric Covered EVA

LAST: L209

CONSTRUCTION: Cement

CARE: Kit 5 - Foam Cleaner, Leather Cream, Leather Protector

RATING: ASTM F2413-18, F/I/C, EH PR, CSA Grade 1, ESR Rated, PR

SIZES: B 5-10,11 D 5-10,11



SWEN-FLEX®



EXTRALIGHT™

SOLE RESISTANCE CHART

X-Lite Surge

Slip	Best
Oil/Gas	Best
Chemicals	Best
Abrasions	Better
Heat	Good
Non-Marking	Yes



MADE IN VIETNAM

NEW

ZERO-G LITE Women's 5-inch Side-Zip Boot

3566 AT PR EH

UPPER: Full Grain Leather

FOOTBED: Fabric Covered EVA

LAST: H209

CONSTRUCTION: Cement

CARE: Kit 5 - Foam Cleaner, Leather Cream, Leather Protector

RATING: ASTM F2413-18, F/I/C, EH PR, CSA Grade 1, ESR Rated, PR

SIZES: B 5-10,11 D 5-10,11



SWEN-FLEX®



EXTRALIGHT™

SOLE RESISTANCE CHART

X-Lite Surge

Slip	Best
Oil/Gas	Best
Chemicals	Best
Abrasions	Better
Heat	Good
Non-Marking	Yes



MADE IN VIETNAM

Puncture Resistant
Résistant aux perforationsMetatarsal Guard
Protège les métatarsesElectrical Hazard
Risqué électriquesales@foxcanada.net
1.866.548.8147
www.foxcanada.net



EXOS LITE FAMILY

Exceptional performance, comfort and protection from Red Wing's lightest work boot.

- Great for warehousing, distribution, construction, light manufacturing and service environments



NEW

EXOS LITE Men's 6-inch Boot

2452 **AT** **PR** **EH**

UPPER: Nubuck, Waterproof, Oiled and Waxed Leather and Mesh Nylon
FOOTBED: Removable Polyurethane
SHANK: Nylon
LAST: JV305
CONSTRUCTION: Cement
CARE: Kit 6 - Waterproof Cleaner, Leather Cream, Leather Protector
RATING: ASTM F2413-18, M/I/C, EH PR, CSA Grade 1, ESR Rated, PR
SIZES: D 6-12,13,14,15 EE 6-12,13,14,15 H 8-12,13



SOLE RESISTANCE CHART

Vibram® X-treme Lite

Slip	Best
Oil/Gas	Best
Chemicals	Best
Abrasions	Best
Heat	Better
Non-Marking	Yes



MADE IN CAMBODIA



EXOS LITE Men's 8-inch Boot

2455 **AT** **PR** **EH**

UPPER: Full Grain, Waterproof and Waxed Leather
FOOTBED: Removable Polyurethane
SHANK: Nylon
LAST: JV305
CONSTRUCTION: Cement
CARE: Kit 6 - Waterproof Cleaner, Leather Cream, Leather Protector
RATING: ASTM F2413-18, M/I/C, EH PR, CSA Grade 1, ESR Rated, PR
SIZES: D 6-12,13,14,15 EE 6-12,13,14,15 H 8-12,13



SOLE RESISTANCE CHART

Vibram® X-treme Lite

Slip	Best
Oil/Gas	Best
Chemicals	Best
Abrasions	Best
Heat	Better
Non-Marking	Yes



MADE IN CAMBODIA

TRUHIKER FAMILY

Hiker style, built for work.

- Durability, comfort, ankle-high support
- Cement constructed for light weight and flexibility
- Mid-height for added support and comfort
- Good for warehousing and light manufacturing



CEMENT

ZERO-G LITE

EXOS LITE

TRUHIKER



TRUHIKER Men's 5-inch Hiker Boot

3541

UPPER: Full Grain, Waterproof Leather

FOOTBED: Removable Polyurethane

SHANK: Nylon

LAST: 220

CONSTRUCTION: Cement

CARE: Kit 6 - Waterproof Cleaner, Leather Cream, Leather Protector

RATING: ASTM F2413-18, M/I/C, EH PR, CSA Grade 1, ESR Rated, PR

SIZES: D 7-12,13,14 EE 7-12,13



SWEN-FLEX®



SOLE RESISTANCE CHART

Rubber-EVA Xplorer

Slip	Best
Oil/Gas	Best
Chemicals	Best
Abrasions	Better
Heat	Best
Non-Marking	Yes



MADE IN VIETNAM



TRUHIKER Men's 6-inch Hiker Boot

3561

UPPER: Suede, Waterproof Leather

FOOTBED: Removable EVA

SHANK: Nylon

LAST: 220

CONSTRUCTION: Cement

CARE: Kit 7 - Roughout/Nubuck Cleaner Kit, N/A, Leather Protector

RATING: ASTM F2413-18, M/I/C, EH PR, CSA Grade 1, ESR Rated, PR

SIZES: D 8-12,13,14 EE 8-12,13



SWEN-FLEX®



SOLE RESISTANCE CHART

Rubber-EVA Xplorer

Slip	Best
Oil/Gas	Best
Chemicals	Best
Abrasions	Better
Heat	Best
Non-Marking	Yes



MADE IN VIETNAM



Puncture Resistant
Résistant aux perforations



Metatarsal Guard
Protège les métatarses



Electrical Hazard
Risqué électrique

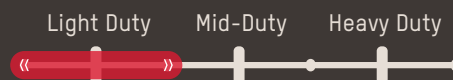
sales@foxcanada.net
1.866.548.8147
www.foxcanada.net



SHIELDLITE FAMILY

Fast like training shoes, but tough like work shoes

- Perspair® technology offers cut resistance and moves moisture away from the foot to keep wearers protected and comfortable all day long
- Flexible and lightweight with strategic high-rebound cushioning for added comfort



SHIELDLITE ATHLETICS Men's Athletic

3259 **NT** **PR** **EH**

UPPER: Perspair®

SHANK: Non-Metallic

LAST: RW-A1041

CONSTRUCTION: Direct Attach

RATING: ASTM F2413-18, M/I/C, EH PR, EN ISO 20345:2011 SB P SRC E FO WRU

SIZES: 35,36,37,38,39,40,41,42,43,44,45,46,47,48 (see EU size comparison chart on page 37)



PERSPAIR

SOLE RESISTANCE CHART

ReboundFlex

Slip	Best
Oil/Gas	Best
Chemicals	Best
Abrasions	Best
Heat	Good
Non-Marking	Yes



MADE IN ITALY

SHIELDLITE ATHLETICS Men's Athletic

3260 **NT** **PR** **EH**

UPPER: Perspair®

SHANK: Non-Metallic

LAST: RW-A1041

CONSTRUCTION: Direct Attach

RATING: ASTM F2413-18, M/I/C, EH PR, EN ISO 20345:2011 SB P SRC E FO WRU

SIZES: 35,36,37,38,39,40,41,42,43,44,45,46,47,48 (see EU size comparison chart on page 37)



PERSPAIR

SOLE RESISTANCE CHART

ReboundFlex

Slip	Best
Oil/Gas	Best
Chemicals	Best
Abrasions	Best
Heat	Good
Non-Marking	Yes



MADE IN ITALY



Steel Toe
Embout en acier



Aluminum Toe
Embout en aluminium



Non-Metallic Toe
Embout non métallique



Waterproof
Imperméable



Insulated
Isolé

TRADESMAN FAMILY

Versatile, durable, hiker-inspired performance

- Ideal for mid-duty construction, warehousing and light manufacturing



TRADESMAN Men's 6-inch Boot

3519

UPPER: Nubuck, Waterproof and Waxed Leather

FOOTBED: Removable Polyurethane

LAST: 601

CONSTRUCTION: Direct Attach

CARE: Kit 4 - Waterproof Cleaner, Mink Oil, Leather Protector

RATING: ASTM F2413-18, M/I/C, EH PR, CSA Grade 1, ESR Rated, PR

SIZES: D 6-12,13,14,15,16 EE 6-12,13,14,15 H 8-12,13,14



MADE IN CHINA

SOLE RESISTANCE CHART

VersaTrax

Slip	Best
Oil/Gas	Best
Chemicals	Best
Abrasions	Best
Heat	Best
Non-Marking	Yes



TRADESMAN Men's 6-inch Side-Zip Boot

3532

UPPER: Full Grain, Waterproof and Waxed Leather and Abrasion Resistant Mesh

FOOTBED: Removable Polyurethane

LAST: 601

CONSTRUCTION: Direct Attach

CARE: Kit 4 - Waterproof Cleaner, Mink Oil, Leather Protector

RATING: ASTM F2413-18, M/I/C, EH PR, CSA Grade 1, ESR Rated, PR

SIZES: D 6-12,13,14,15,16 EE 6-12,13,14,15 H 8-12,13,14



MADE IN CHINA

SOLE RESISTANCE CHART

VersaTrax

Slip	Best
Oil/Gas	Best
Chemicals	Best
Abrasions	Best
Heat	Best
Non-Marking	Yes



Puncture Resistant
Résistant aux perforations



Metatarsal Guard
Protège les métatarses



Electrical Hazard
Risqué électrique

sales@foxcanada.net
1.866.548.8147
www.foxcanada.net

DIRECT ATTACH

SHIELDLITE

TRADESMAN

TRADESWOMAN

KING TOE® ADC

KING TOE®



DIRECT ATTACH

SHIELDLITE

TRADESMAN

TRADESWOMAN

KING TOE® ADC

KING TOE®



TRADESMAN Men's 8-inch Boot

3531

UPPER: Nubuck, Waterproof and Waxed Leather and Abrasion Resistant Mesh

FOOTBED: Removable Polyurethane

LAST: 601

CONSTRUCTION: Direct Attach

CARE: Kit 4 - Waterproof Cleaner, Mink Oil, Leather Protector

RATING: ASTM F2413-18, M/I/C, EH PR, CSA Grade 1, ESR Rated, PR

SIZES: D 6-12,13,14,15,16 EE 6-12,13,14,15 H 8-12,13,14



SOLE RESISTANCE CHART

VersaTrax

Slip	Best
Oil/Gas	Best
Chemicals	Best
Abrasions	Best
Heat	Best
Non-Marking	Yes



MADE IN CHINA



Steel Toe
Embout en acier



Aluminum Toe
Embout en aluminium



Non-Metallic Toe
Embout non métallique



Waterproof
Imperméable



Insulated
Isolé

TRADESWOMAN FAMILY

Versatile, hiker-inspired performance for women.

- Built to fit the unique shape of a woman's foot, enhancing all-day comfort
- Ideal for mid-duty construction, warehousing and light manufacturing



NEW

TRADESWOMAN Women's 6-inch Boot

3542 **NT** **PR** **EH**

UPPER: Full Grain, Waterproof Leather and Abrasion Resistant Mesh

FOOTBED: Removable Polyurethane

LAST: 601-W

CONSTRUCTION: Direct Attach

CARE: Kit 6 - Waterproof Cleaner, Leather Cream, Leather Protector

RATING: ASTM F2413-18, F/I/C, EH PR, CSA Grade 1, ESR Rated, PR

SIZES: B 6-10,11 D 6-10,11



SOLE RESISTANCE CHART

VersaTrax

Slip	Best
Oil/Gas	Best
Chemicals	Best
Abrasions	Best
Heat	Best
Non-Marking	Yes



MADE IN CHINA



Puncture Resistant
Résistant aux perforations



Metatarsal Guard
Protège les métatarses



Electrical Hazard
Risque électrique

sales@foxcanada.net
1.866.548.8147
www.foxcanada.net



KING TOE® ADC FAMILY

Built to surround your feet with durability, stability, and protection throughout the workday.

- 44% more toe room than our standard work boots
- Ideal for indoor and outdoor light- to mid-duty work environments



KING TOE® ADC Men's 6-inch Boot
3513

UPPER: Nubuck, Waterproof, Oiled and Waxed Leather
FOOTBED: Quadrex Four-Layer System
LAST: 800
CONSTRUCTION: Direct Attach
CARE: Kit 4 - Waterproof Cleaner, Mink Oil, Leather Protector
RATING: ASTM F2413-18, M/I/C, EH PR, CSA Grade 1, ESR Rated, PR
SIZES: D 7-12,13,14,15 EE 7-12,13,14 H 8-12,13,14



SOLE RESISTANCE CHART

Rubber VariLug

Slip	Best
Oil/Gas	Best
Chemicals	Best
Abrasions	Best
Heat	Best
Non-Marking	Yes



MADE IN CAMBODIA



KING TOE® ADC Men's 8-inch Boot
3552

UPPER: Nubuck, Waterproof, Oiled and Waxed Leather
FOOTBED: Quadrex Four-Layer System
LAST: 800
CONSTRUCTION: Direct Attach
CARE: Kit 4 - Waterproof Cleaner, Mink Oil, Leather Protector
RATING: ASTM F2413-18, M/I/C, EH PR, CSA Grade 1, ESR Rated, PR
SIZES: D 7-12,13,14,15 EE 7-12,13,14 H 8-12,13,14



SOLE RESISTANCE CHART

Rubber VariLug

Slip	Best
Oil/Gas	Best
Chemicals	Best
Abrasions	Best
Heat	Best
Non-Marking	Yes



MADE IN CAMBODIA



KING TOE® ADC Men's 8-inch Boot
3516

UPPER: Nubuck, Waterproof, Oiled and Waxed Leather
FOOTBED: Quadrex Four-Layer System
LAST: 800
CONSTRUCTION: Direct Attach
CARE: Kit 4 - Waterproof Cleaner, Mink Oil, Leather Protector
RATING: ASTM F2413-18, M/I/C, Mt EH PR, CSA Grade 1, ESR Rated, PR, M
SIZES: D 7-12,13,14,15 EE 7-12,13,14 H 8-12,13,14



SOLE RESISTANCE CHART

Rubber VariLug

Slip	Best
Oil/Gas	Best
Chemicals	Best
Abrasions	Best
Heat	Best
Non-Marking	Yes

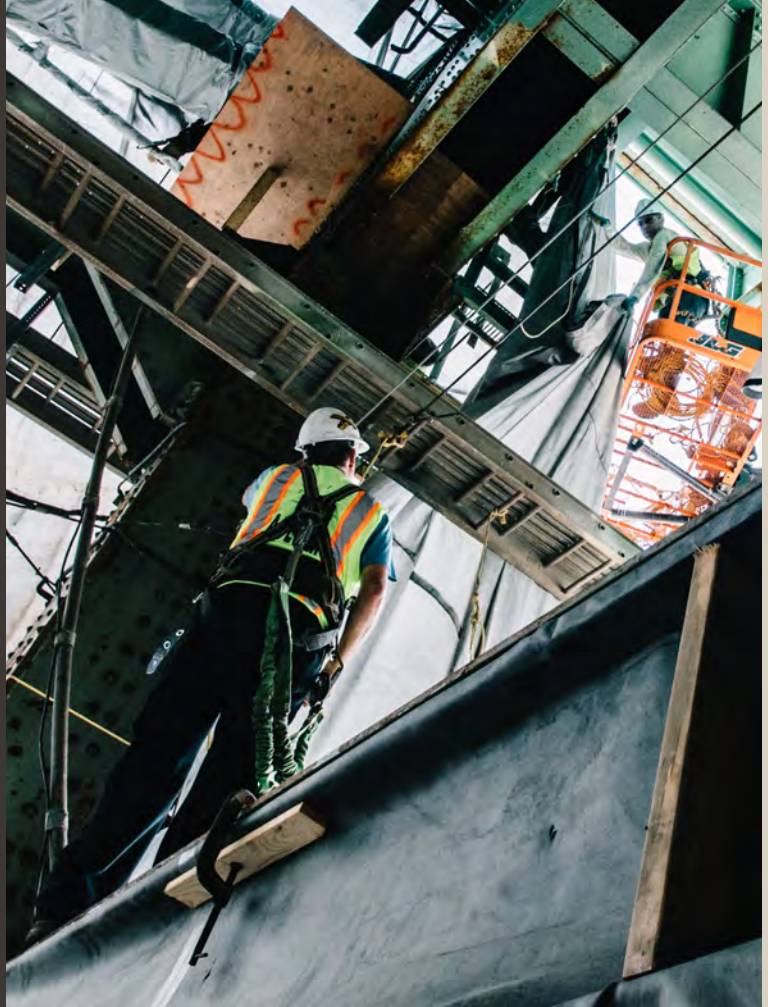


MADE IN CAMBODIA

KING TOE® FAMILY

Flexible and comfortable, extra toe room

- 44% more toe room than our standard work boots
- Directly bonded sole to leather upper for flexibility and durability
- Exceptional performance for both indoor and outdoor light- to mid-duty work environments



DIRECT ATTACH

SHIELDLITE

TRADESMAN

TRADESWOMAN

KING TOE® ADC

KING TOE®



KING TOE Men's 6-inch Boot

3506

UPPER: Full Grain, Waterproof Leather

FOOTBED: Nylon Covered Polyurethane

SHANK: Non-metallic

LAST: 800

CONSTRUCTION: Direct Attach

CARE: Kit 6 - Waterproof Cleaner, Leather Cream, Leather Protector

RATING: ASTM F2413-18, M/I/C, EH PR, CSA Grade 1, ESR Rated, PR

SIZES: D 7-12,13,14,15 EE 8-12,13,14 H 8-12,13



MADE IN CAMBODIA

SOLE RESISTANCE CHART

Vibram® Galactico
Fire and Ice

Slip	Best
Oil/Gas	Best
Chemicals	Best
Abrasions	Best
Heat	Best
Non-Marking	Yes



KING TOE Men's 8-inch Boot

3548

UPPER: Full Grain, Waterproof Leather

FOOTBED: Nylon Covered Polyurethane

SHANK: Non-metallic

LAST: 800

CONSTRUCTION: Direct Attach

CARE: Kit 6 - Waterproof Cleaner, Leather Cream, Leather Protector

RATING: ASTM F2413-18, M/I/C, EH PR, CSA Grade 1, ESR Rated, PR

SIZES: D 7-12,13,14,15 EE 8-12,13,14 H 8-12,13



MADE IN CAMBODIA

SOLE RESISTANCE CHART

Vibram® Galactico
Fire and Ice

Slip	Best
Oil/Gas	Best
Chemicals	Best
Abrasions	Best
Heat	Best
Non-Marking	Yes



Puncture Resistant
Résistant aux perforations

Metatarsal Guard
Protège les métatarses

Electrical Hazard
Risque électrique

sales@foxcanada.net
1.866.548.8147
www.foxcanada.net



KING TOE Men's 8-inch Boot
3530
UPPER: Full Grain, Waterproof Leather
FOOTBED: Nylon Covered Polyurethane
SHANK: Non-metallic
LAST: 800
CONSTRUCTION: Direct Attach
CARE: Kit 6 - Waterproof Cleaner, Leather Cream, Leather Protector
RATING: ASTM F2413-18, M/I/C, Mt EH PR, CSA Grade 1, ESR Rated, PR, M
SIZES: D 7-12,13,14,15 EE 8-12,13,14 H 8-12,13



SOLE RESISTANCE CHART	
Vibram® Galactic Fire and Ice	
Slip	Best
Oil/Gas	Best
Chemicals	Best
Abrasions	Best
Heat	Best
Non-Marking	Yes

MADE IN CAMBODIA



KING TOE Men's 8-inch Boot
3512
UPPER: Full Grain, Waterproof and Waxed Leather
FOOTBED: Nylon Covered Polyurethane
SHANK: Non-metallic
LAST: 800
CONSTRUCTION: Direct Attach
CARE: Kit 4 - Waterproof Cleaner, Mink Oil, Leather Protector
RATING: ASTM F2413-18, M/I/C, EH PR, CSA Grade 1, ESR Rated, PR
SIZES: D 7-12,13,14,15 EE 8-12,13,14 H 8-12,13



SOLE RESISTANCE CHART	
Vibram® Galactic Fire and Ice	
Slip	Best
Oil/Gas	Best
Chemicals	Best
Abrasions	Best
Heat	Best
Non-Marking	Yes

MADE IN CAMBODIA

BURNSIDE FAMILY

Premium all-day comfort and heavy-duty performance.

- Hand-built entirely in Red Wing, MN.
- Built for punishing work in manufacturing, construction and the oil and gas industry.



DIRECT ATTACH TO WELT

BURNSIDE

BRNR XP

SUPERSOLE® 2.0



NEW

BURNSIDE Men's 6-inch Boot

3517 NT PR EH

UPPER: Nubuck, Waterproof and Waxed Leather and Abrasion Resistant Synthetic

FOOTBED: Quadrex V2 Multi-Layer System

SHANK: Fiberglass

LAST: 687

CONSTRUCTION: Direct Attach to Welt

CARE: Kit 4 - Waterproof Cleaner, Mink Oil, Leather Protector

RATING: ASTM F2413-18, M/I/C, EH PR, CSA Grade 1, ESR Rated, PR

SIZES: D 6-12,13,14,15,16 EE 6-12,13,14,15 H 8-12,13,14



SOLE RESISTANCE CHART

Vibram® UltraSole

Slip	Best
Oil/Gas	Best
Chemicals	Best
Abrasions	Best
Heat	Best
Non-Marking	Yes



MADE IN THE USA W/IMPORTED MATERIALS



NEW

BURNSIDE Men's 8-inch Boot

3520 NT PR EH

UPPER: Nubuck, Waterproof and Waxed Leather and Abrasion Resistant Synthetic

FOOTBED: Quadrex V2 Multi-Layer System

SHANK: Fiberglass

LAST: 687

CONSTRUCTION: Direct Attach to Welt

CARE: Kit 4 - Waterproof Cleaner, Mink Oil, Leather Protector

RATING: ASTM F2413-18, M/I/C, EH PR, CSA Grade 1, ESR Rated, PR

SIZES: D 6-12,13,14,15,16 EE 6-12,13,14,15 H 8-12,13,14



SOLE RESISTANCE CHART

Vibram® UltraSole

Slip	Best
Oil/Gas	Best
Chemicals	Best
Abrasions	Best
Heat	Best
Non-Marking	Yes



MADE IN THE USA W/IMPORTED MATERIALS



Puncture Resistant
Résistant aux perforations



Metatarsal Guard
Protège les métatarses



Electrical Hazard
Risque électrique

sales@foxcanada.net
1.866.548.8147
www.foxcanada.net



BRNR XP FAMILY

Advanced durability, comfort and slip-resistance for tough work environments

- Highly durable direct attach to welt construction
- Multi-layer Quadrex V2 footbed system for maximum underfoot comfort
- Best-in-class slip-resistant rubber GripTek sole
- Great for oil and gas environments, construction and manufacturing

**NEW****BRNR XP Men's 6-inch Boot****3572** NT PR

UPPER: Full Grain, Waterproof Leather and Abrasion Resistant Mesh
FOOTBED: Quadrex V2 Multi-Layer System

SHANK: Fiberglass

LAST: 687

CONSTRUCTION: Direct Attach to Welt

CARE: Kit 6 - Waterproof Cleaner, Leather Cream, Leather Protector

RATING: ASTM F2413-18, M/I/C, EH PR, CSA Grade 1, ESR Rated, PR

SIZES: D 7-12,13,14,15 EE 7-12,13,14,15 H 8-12,13

**SOLE RESISTANCE CHART****Dual Density GripTek**

Slip	Best
Oil/Gas	Best
Chemicals	Best
Abrasions	Best
Heat	Best
Non-Marking	Yes



ASSEMBLED IN THE **USA** W/IMPORTED COMPONENTS

**NEW****BRNR XP Men's 8-inch Boot****3534** NT PR

UPPER: Full Grain, Waterproof Leather and Abrasion Resistant Mesh
FOOTBED: Quadrex V2 Multi-Layer System

SHANK: Fiberglass

LAST: 687

CONSTRUCTION: Direct Attach to Welt

CARE: Kit 6 - Waterproof Cleaner, Leather Cream, Leather Protector

RATING: ASTM F2413-18, M/I/C, Mt EH PR, CSA Grade 1, ESR Rated, PR

SIZES: D 7-12,13,14,15 EE 7-12,13,14,15 H 8-12,13

**SOLE RESISTANCE CHART****Dual Density GripTek**

Slip	Best
Oil/Gas	Best
Chemicals	Best
Abrasions	Best
Heat	Best
Non-Marking	Yes



ASSEMBLED IN THE **USA** W/IMPORTED COMPONENTS



Steel Toe
Embout en acier



Aluminum Toe
Embout en aluminium



Non-Metallic Toe
Embout non métallique



Waterproof
Imperméable



Insulated
Isolé



DIRECT ATTACH TO WELT

BURNSIDE

BRNR XP

SUPERSOLE® 2.0



NEW

BRNR XP Men's 8-inch Boot
3573

NT PW EH


UPPER: Full Grain, Waterproof Leather and Abrasion Resistant Mesh
FOOTBED: Quadrex V2 Multi-Layer System
SHANK: Fiberglass
LAST: 687
CONSTRUCTION: Direct Attach to Welt
CARE: Kit 6 - Waterproof Cleaner, Leather Cream, Leather Protector
RATING: ASTM F2413-18, M/I/C, EH PR, CSA Grade 1, ESR Rated, PR
SIZES: D 7-12,13,14,15 EE 7-12,13,14,15 H 8-12,13



SOLE RESISTANCE CHART

Dual Density GripTek

Slip	Best
Oil/Gas	Best
Chemicals	Best
Abrasions	Best
Heat	Best
Non-Marking	Yes



ASSEMBLED IN THE USA W/IMPORTED COMPONENTS



NEW

BRNR XP Men's 11-inch Pull-On Boot
3555

NT PW EH


UPPER: Full Grain, Waterproof Leather and Abrasion Resistant Mesh
FOOTBED: Quadrex V2 Multi-Layer System
SHANK: Fiberglass
LAST: 687
CONSTRUCTION: Direct Attach to Welt
CARE: Kit 6 - Waterproof Cleaner, Leather Cream, Leather Protector
RATING: ASTM F2413-18, M/I/C, EH PR, CSA Grade 1, ESR Rated, PR
SIZES: D 7-12,13,14,15 EE 7-12,13,14,15 H 8-12,13



SOLE RESISTANCE CHART

Dual Density GripTek

Slip	Best
Oil/Gas	Best
Chemicals	Best
Abrasions	Best
Heat	Best
Non-Marking	Yes



ASSEMBLED IN THE USA W/IMPORTED COMPONENTS



NEW

BRNR XP Women's 8-inch Boot
3554

NT PW EH


UPPER: Full Grain, Waterproof Leather and Abrasion Resistant Mesh
FOOTBED: Quadrex V2 Multi-Layer System
SHANK: Fiberglass
LAST: 710
CONSTRUCTION: Direct Attach to Welt
CARE: Kit 6 - Waterproof Cleaner, Leather Cream, Leather Protector
RATING: ASTM F2413-18, F/I/C, EH PR, CSA Grade 1, ESR Rated, PR
SIZES: B 6-10,11 D 6-10,11



SOLE RESISTANCE CHART

Dual Density GripTek

Slip	Best
Oil/Gas	Best
Chemicals	Best
Abrasions	Best
Heat	Best
Non-Marking	Yes



ASSEMBLED IN THE USA W/IMPORTED COMPONENTS



SUPERSOLE® 2.0 FAMILY

A classic with combined comfort and durability

- Two-density outsole has soft inner core for comfort and harder clear outer shell for maximum durability
- Proven, durable direct attach to welt construction
- Extra-long wearing outsole resists chemicals and oil



SUPERSOLE® 2.0 Men's 6-inch Boot 3504

ST **PR** **EH**

UPPER: Full Grain, Waterproof Leather
FOOTBED: ComfortForce
SHANK: Fiberglass
LAST: 694
CONSTRUCTION: Dual Density SuperSole® Welt
CARE: Kit 6 - Waterproof Cleaner, Leather Cream, Leather Protector
RATING: ASTM F2413-18, M/I/C, EH PR, CSA Grade 1, ESR Rated, PR
SIZES: B 10-12,13,14 D 7-12,13,14,15 E 8-12,13 EEE 8-12,13



SOLE RESISTANCE CHART

Aztec SuperSole® 2.0

Slip	Better
Oil/Gas	Best
Chemicals	Best
Abrasions	Best
Heat	Good
Non-Marking	Yes



MADE IN THE USA



SUPERSOLE® 2.0 Men's 6-inch Boot 3507

PR **EH**

UPPER: Full Grain, Waterproof Leather
FOOTBED: ComfortForce
SHANK: Fiberglass
LAST: 694
CONSTRUCTION: Dual Density SuperSole® Welt
CARE: Kit 6 - Waterproof Cleaner, Leather Cream, Leather Protector
RATING: ASTM F2413-18, M/I/C, EH PR, CSA Grade 1, ESR Rated, PR
SIZES: B 9-12,13,14 D 7-12,13,14,15 EE 7-12,13,14 H 8-12,13



SOLE RESISTANCE CHART

Aztec SuperSole® 2.0

Slip	Better
Oil/Gas	Best
Chemicals	Best
Abrasions	Best
Heat	Good
Non-Marking	Yes



MADE IN THE USA



SUPERSOLE® 2.0 Men's 8-inch Boot 2412

ST **PR** **EH**

UPPER: Full Grain, Waterproof Leather
FOOTBED: ComfortForce
SHANK: Fiberglass
LAST: 694
CONSTRUCTION: Dual Density SuperSole® Welt
CARE: Kit 6 - Waterproof Cleaner, Leather Cream, Leather Protector
RATING: ASTM F2413-18, M/I/C, EH PR, CSA Grade 1, ESR Rated, PR
SIZES: B 10-12,13,14 D 6-12,13,14,15 E 7-12,13 EEE 7-12,13,14,15



SOLE RESISTANCE CHART

Aztec SuperSole® 2.0

Slip	Better
Oil/Gas	Best
Chemicals	Best
Abrasions	Best
Heat	Good
Non-Marking	Yes



MADE IN THE USA

**SUPERSOLE® 2.0 Men's 8-inch Boot****2416**

UPPER: Full Grain, Waterproof Leather

FOOTBED: ComfortForce

SHANK: Fiberglass

LAST: 694

CONSTRUCTION: Dual Density SuperSole® Welt

CARE: Kit 6 - Waterproof Cleaner, Leather Cream, Leather Protector

RATING: ASTM F2413-18, M/I/C, EH PR, CSA Grade 1, ESR Rated, PR

SIZES: B 10-12,13 D 7-12,13,14 EEE 8-12,13

MADE IN THE **USA****SOLE RESISTANCE CHART****Aztec SuperSole® 2.0**

Slip	Better
Oil/Gas	Best
Chemicals	Best
Abrasions	Best
Heat	Good
Non-Marking	Yes

**SUPERSOLE® 2.0 Men's 8-inch Boot****2414**

UPPER: Full Grain, Waterproof Leather

FOOTBED: ComfortForce

SHANK: Fiberglass

LAST: 694

CONSTRUCTION: Dual Density SuperSole® Welt

CARE: Kit 6 - Waterproof Cleaner, Leather Cream, Leather Protector

RATING: ASTM F2413-18, M/I/C, EH PR, CSA Grade 1, ESR Rated, PR

SIZES: B 10-12,13,14 D 7-12,13,14,15 E 7-12,13 EEE 7-12,13,14

MADE IN THE **USA****SOLE RESISTANCE CHART****Aztec SuperSole® 2.0**

Slip	Better
Oil/Gas	Best
Chemicals	Best
Abrasions	Best
Heat	Good
Non-Marking	Yes

**SUPERSOLE® 2.0 Men's 8-inch Boot****3508**

UPPER: Full Grain, Waterproof Leather

FOOTBED: ComfortForce

SHANK: Fiberglass

LAST: 694

CONSTRUCTION: Dual Density SuperSole® Welt

CARE: Kit 6 - Waterproof Cleaner, Leather Cream, Leather Protector

RATING: ASTM F2413-18, M/I/C, EH PR, CSA Grade 1, ESR Rated, PR

SIZES: B 10-12,13,14 D 7-12,13,14,15,16 EE 7-12,13,14 H 8-12,13

MADE IN THE **USA****SOLE RESISTANCE CHART****Aztec SuperSole® 2.0**

Slip	Better
Oil/Gas	Best
Chemicals	Best
Abrasions	Best
Heat	Good
Non-Marking	Yes

**SUPERSOLE® 2.0 Men's 11-inch Pull-On Boot****3505**

UPPER: Full Grain, Oiled Leather

FOOTBED: ComfortForce

SHANK: Fiberglass

LAST: 696

CONSTRUCTION: Dual Density SuperSole® Welt

CARE: Kit 1 - Foam Cleaner, All Natural Boot Oil, Leather Protector

RATING: ASTM F2413-18, M/I/C, EH PR, CSA Grade 1, ESR Rated, PR

SIZES: D 7-12,13,14,15 EE 7-12,13 H 8-12,13

MADE IN THE **USA****SOLE RESISTANCE CHART****Aztec SuperSole® 2.0**

Slip	Better
Oil/Gas	Best
Chemicals	Best
Abrasions	Best
Heat	Good
Non-Marking	Yes



TRACTION TRED LITE FAMILY

A lightweight version of the classic work boot with iconic flat-bottom sole that offers stability and all-day comfort

- Lighter than classic traction tread styles
- Modern design inspired by the iconic Traction Tred styles
- Innovative dual-density footbed for stability and cushioned comfort
- Welt construction provides stability



NEW **TRACTION TRED LITE Men's 8-inch Boot**
3522 **NT** **PR** **EH**
UPPER: Nubuck, Waterproof, Oiled and Waxed Leather
FOOTBED: Removable Polyurethane
LAST: 325
CONSTRUCTION: Welt
CARE: Kit 4 - Waterproof Cleaner, Mink Oil, Leather Protector
RATING: ASTM F2413-18, M/I/C, EH PR, CSA Grade 1, ESR Rated, PR
SIZES: D 7-12,13,14,15 EE 8-12,13,14 H 8-12



SOLE RESISTANCE CHART	
LiteTred	
Slip	Best
Oil/Gas	Best
Chemicals	Best
Abrasions	Best
Heat	Best
Non-Marking	Yes



MADE IN VIETNAM



NEW **TRACTION TRED LITE Women's 8-inch Boot**
3537 **NT** **PR** **EH**
UPPER: Full Grain, Waterproof and Waxed Leather
FOOTBED: Removable Polyurethane
LAST: 325
CONSTRUCTION: Welt
CARE: Kit 4 - Waterproof Cleaner, Mink Oil, Leather Protector
RATING: ASTM F2413-18, F/I/C, EH PR, CSA Grade 1, ESR Rated, PR
SIZES: B 5-10,11 D 5-10,11



SOLE RESISTANCE CHART	
LiteTred	
Slip	Best
Oil/Gas	Best
Chemicals	Best
Abrasions	Best
Heat	Best
Non-Marking	Yes



MADE IN VIETNAM

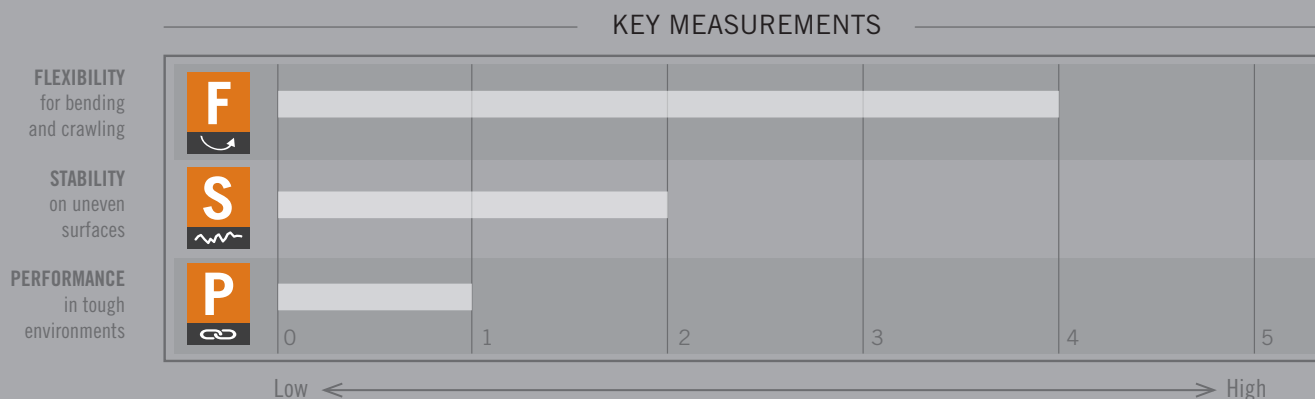
CEMENT CONSTRUCTION

HOW IT'S BUILT

A simple construction process solidly cements the sole directly to the upper using the lightest weight, most flexible fastening solution available - no weight added!

CEMENT CONSTRUCTION RESULTS

All-day comfort and flexibility that conforms to the job in a lightweight design that's built for speed without fatigue in warehouses and other light-duty environments.



ZINC



ZINC Men's Oxford

5923 NT EH

UPPER: Nubuck, Oiled and Waxed Leather

FOOTBED: Removable Polyurethane

SHANK: Non-metallic

LAST: 882

CONSTRUCTION: Cement

CARE: Kit 5 - Foam Cleaner, Leather Cream, Leather Protector

RATING: ASTM F2413-18, M/I/C, EH, CSA Grade 1,
Protective Toe Only

SIZES: M 7-12,13,14 WW 8-12,13,14



SOLE RESISTANCE CHART

StarGrip® X2

Slip	Best
Oil/Gas	Best
Chemicals	Better
Abrasions	Best
Heat	Best
Non-Marking	Yes



MADE IN CAMBODIA

WORX WELT CONSTRUCTION
KEY MEASUREMENTS

FLEXIBILITY
for bending
and crawling

STABILITY
on uneven
surfaces

PERFORMANCE
in tough
environments



TACONITE SERIES Heavy-duty metatarsal protection work footwear



TACONITE Men's 8-inch Boot

5918 **ST** **PR** **MT** **EH**

UPPER: Full Grain, Oiled Leather

FOOTBED: Removable Polyurethane

SHANK: Steel

LAST: 800

CONSTRUCTION: Goodyear Welt

CARE: Kit 1 - Foam Cleaner, All Natural Boot Oil, Leather Protector

RATING: ASTM F2413-18, M/I/C, Mt EH PR, CSA Grade 1, ESR Rated, PR

SIZES: M 7-12,13,14 WW 8-12,13,14



SOLE RESISTANCE CHART

Rubber Resister

Slip	Best
Oil/Gas	Best
Chemicals	Better
Abrasions	Best
Heat	Best
Non-Marking	Yes



MADE IN CAMBODIA

GRAVEL SERIES Heavy-duty work footwear



GRAVEL Men's 6-inch Boot

5906 **ST** **PR** **EH**

UPPER: Nubuck, Oiled and Waxed Leather

FOOTBED: Removable Polyurethane

SHANK: Steel

LAST: 800

CONSTRUCTION: Goodyear Welt

CARE: Kit 2 - Foam Cleaner, All Natural Leather Conditioner, Leather Protector

RATING: ASTM F2413-18, M/I/C, EH PR, CSA Grade 1, ESR Rated, PR

SIZES: M 7-12,13,14 WW 8-12,13,14



SOLE RESISTANCE CHART

Rubber Resister

Slip	Best
Oil/Gas	Best
Chemicals	Better
Abrasions	Best
Heat	Best
Non-Marking	Yes



MADE IN CAMBODIA



GRAVEL Men's 8-inch Boot

5908 **ST** **PR** **EH**

UPPER: Nubuck, Oiled and Waxed Leather

FOOTBED: Removable Polyurethane

SHANK: Steel

LAST: 800

CONSTRUCTION: Goodyear Welt

CARE: Kit 2 - Foam Cleaner, All Natural Leather Conditioner, Leather Protector

RATING: ASTM F2413-18, M/I/C, EH PR, CSA Grade 1, ESR Rated, PR

SIZES: M 7-12,13,14 WW 8-12,13,14



SOLE RESISTANCE CHART

Rubber Resister

Slip	Best
Oil/Gas	Best
Chemicals	Better
Abrasions	Best
Heat	Best
Non-Marking	Yes



MADE IN CAMBODIA

ST Steel Toe
Embout en acier

AT Aluminum Toe
Embout en aluminium

NT Non-Metallic Toe
Embout non métallique

Waterproof
Imperméable

Insulated
Isolé



WINGSHOOTER ST

Iconic design plus superior comfort and support.

WINGSHOOTER ST Men's 8-inch Boot

83856

UPPER: Full Grain, Waterproof Leather

FOOTBED: Removable Polyurethane

CONSTRUCTION: Welt

LAST: 157

CARE: Kit 6 - Waterproof Cleaner, Leather Cream, Leather Protector

RATING: ASTM F2413-18, M/I/C, EH PR, CSA Grade 1, ESR Rated, PR

SIZES: D 6-12,13,14,15 EE 7-12,13,14



ULTRA
DRY®



HR

Rubber-EVA Traction Tred

- EVA midsole reduces weight and provides underfoot cushioning
- Rubber outsole for durability



Slip Resistance Best

Oil/Gas Best

Chemicals Best

Abrasions Best

Heat Best

Non-Marking Yes

PR

Puncture Resistant
Résistant aux perforations

MT

Metatarsal Guard
Protège les métatarses

EH

Electrical Hazard
Risque électrique

sales@foxcanada.net
1.866.548.8147
www.foxcanada.net

WINGSHOOTER ST

KASOTA

CROSBY

KASOTA

Versatile work boots with trend-right designs and colors.

WINGSHOOTER ST

KASOTA

CROSBY

KASOTA Men's 6-inch Boot

83660

NEW



UPPER: Full Grain, Waterproof Leather and Abrasion Resistant Synthetic

FOOTBED: Removable Memory Foam-EVA

CONSTRUCTION: Direct Attach

LAST: 882-CH

CARE: Kit 6 - Waterproof Cleaner, Leather Cream, Leather Protector

RATING: ASTM F2413-18, M/I/C, EH PR, CSA Grade 1, ESR Rated, PR

SIZES: D 8-12,13,14 EE 8-12,13,14

ULTRA DRY®



SWEN-FLEX®

CUSHIN

ARMA-TEC



HRO

TriTek

- Dual density midsole delivers maximum underfoot comfort
- ENERG high rebound PU provides great comfort, returns energy and fights fatigue



Slip Resistance Best

Oil/Gas Best

Chemicals Best

Abrasions Best

Heat Best

Non-Marking Yes

KASOTA Men's 8-inch Boot

83864

NEW



UPPER: Full Grain, Waterproof Leather and Abrasion Resistant Synthetic

FOOTBED: Removable Memory Foam-EVA

CONSTRUCTION: Direct Attach

LAST: 882-CH

CARE: Kit 6 - Waterproof Cleaner, Leather Cream, Leather Protector

RATING: ASTM F2413-18, M/I/C, EH PR, CSA Grade 1, ESR Rated, PR

SIZES: D 8-12,13,14 EE 8-12,13,14

ULTRA DRY®



SWEN-FLEX®

ARMA-TEC

BOA



HRO

TriTek

- Dual density midsole delivers maximum underfoot comfort
- ENERG high rebound EVA provides great comfort, returns energy and fights fatigue



Slip Resistance Best

Oil/Gas Best

Chemicals Best

Abrasions Best

Heat Best

Non-Marking Yes

KASOTA Men's 8-inch Boot

83866

NEW



UPPER: Full Grain, Waterproof Leather and Abrasion Resistant Synthetic

FOOTBED: Removable Memory Foam-EVA

CONSTRUCTION: Direct Attach

LAST: 882-CH

CARE: Kit 6 - Waterproof Cleaner, Leather Cream, Leather Protector

RATING: ASTM F2413-18, M/I/C, EH PR, CSA Grade 1, ESR Rated, PR

SIZES: D 8-12,13,14 EE 8-12,13,14

ULTRA DRY®



SWEN-FLEX®

CUSHIN

ARMA-TEC



HRO

TriTek

- Dual density midsole delivers maximum underfoot comfort
- ENERG high rebound PU provides great comfort, returns energy and fights fatigue



Slip Resistance Best

Oil/Gas Best

Chemicals Best

Abrasions Best

Heat Best

Non-Marking Yes



Light, comfortable boots with the latest technology.

CROSBY Men's 6-inch Boot

83602

UPPER: Nubuck, Waterproof, Oiled and Waxed Leather

FOOTBED: Removable Memory Foam-EVA

CONSTRUCTION: Cement to Welt

LAST: 157

CARE: Kit 6 - Waterproof Cleaner, Leather Cream, Leather Protector

RATING: ASTM F2413-18, M/I/C, EH PR, CSA Grade 1, ESR Rated, PR

SIZES: D 8-12,13,14 EE 8-12,13,14



ULTRA
DRY



SWEN-FLEX

CUSHIN

ARMA
TEC



HRO

STABLE
FLEX

CORE
STYLE

Rubber Diamond Tred

- Dual-density sole provides maximum underfoot comfort
- ENERG high rebound EVA provides great comfort
- Oil and slip resistant



Slip Resistance Best

Oil/Gas	Best
Chemicals	Best
Abrasions	Best
Heat	Best
Non-Marking	Yes

CROSBY Men's 8-inch Boot

83842

UPPER: Nubuck, Waterproof, Waxed Leather and Abrasion Resistant Nylon

FOOTBED: Removable Memory Foam-EVA

CONSTRUCTION: Cement to Welt

LAST: 157

CARE: Kit 6 - Waterproof Cleaner, Leather Cream, Leather Protector

RATING: ASTM F2413-18, M/I/C, EH PR, CSA Grade 1, ESR Rated, PR

SIZES: D 8-12,13,14 EE 8-12,13,14



ULTRA
DRY



SWEN-FLEX

CUSHIN

ARMA
TEC



HRO

STABLE
FLEX

CORE
STYLE

Rubber Diamond Tred

- Dual-density sole provides maximum underfoot comfort
- ENERG high rebound EVA provides great comfort
- Oil and slip resistant



Slip Resistance Best

Oil/Gas	Best
Chemicals	Best
Abrasions	Best
Heat	Best
Non-Marking	Yes

PR

Puncture Resistant
Résistant aux perforations

MT

Metatarsal Guard
Protège les métatarses

EH

Electrical Hazard
Risque électrique

sales@foxcanada.net
1.866.548.8147
www.foxcanada.net

CROSBY Women's 6-inch Boot 83216

NT PR



UPPER: Nubuck, Waterproof, Oiled and Waxed Leather

FOOTBED: Removable Memory Foam-EVA

CONSTRUCTION: Cement to Welt

LAST: L157

CARE: Kit 6 - Waterproof Cleaner, Leather Cream, Leather Protector

RATING: ASTM F2413-18, F/I/C, EH PR, CSA Grade 1, ESR Rated, PR
SIZES: B 5-10,11 D 6-10

WOMENS
-FIT-

ULTRA
DRY®



SWEN-FLEX®

CUSHIN

ARMA
TEC



HRO

STABLE
FLEX

Rubber Diamond Tred

- Dual-density sole provides maximum underfoot comfort
- ENERG high rebound EVA provides great comfort
- Oil and slip resistant



Slip Resistance Best

Oil/Gas Best

Chemicals Best

Abrasions Best

Heat Best

Non-Marking Yes

CROSBY Women's 8-inch Boot 83218

NT PR



UPPER: Nubuck, Waterproof, Oiled, Waxed Leather and Abrasion Resistant Nylon

FOOTBED: Removable Memory Foam-EVA

CONSTRUCTION: Cement to Welt

LAST: L157

CARE: Kit 6 - Waterproof Cleaner, Leather Cream, Leather Protector

RATING: ASTM F2413-18, F/I/C, EH PR, CSA Grade 1, ESR Rated, PR
SIZES: B 5-10,11 D 6-10

WOMENS
-FIT-

ULTRA
DRY®



SWEN-FLEX®

CUSHIN

ARMA
TEC



HRO

STABLE
FLEX

Rubber Diamond Tred

- Dual-density sole provides maximum underfoot comfort
- ENERG high rebound EVA provides great comfort
- Oil and slip resistant



Slip Resistance Best

Oil/Gas Best

Chemicals Best

Abrasions Best

Heat Best

Non-Marking Yes

WINGSHOOTER ST

KASOTA

CROSBY



Steel Toe
Embout en acier



Aluminum Toe
Embout en aluminium



Non-Metallic Toe
Embout non métallique



Waterproof
Imperméable



Insulated
Isolé



HELP YOUR CONSUMERS PROTECT THEIR INVESTMENT

Red Wing Care Kits are designed to extend the life and good looks of Red Wing, Irish Setter or WORX leather footwear.

NEW SAMPLE SIZE KITS PROVIDE ADDITIONAL SOLUTIONS FOR PROTECTING CONSUMERS' INVESTMENTS

Each kit features sample size products that will help protect your investment with a cleaner, conditioner and protector made for the leather in your footwear. All products are made in the USA.

Please note: There is not a Sample Care Kit #7. For styles that use Care Kit #7, please use full size products.

SAMPLE SIZE CARE KITS



NEW STYLE NO. 98017 CARE KIT #1

Care Kit 1 is designed for Full Grain or Nubuck leathers that have oil added to them during the tanning process. Clean with Foam Cleaner (2oz), Condition with All Natural Boot Oil (2oz) and Protect with Leather Protector (2oz).

Case of 12 | MADE IN USA



NEW STYLE NO. 98018 CARE KIT #2

Care Kit 2 is designed for Full Grain or Nubuck leathers that have wax added to them during the tanning process. Clean with Foam Cleaner (2oz), Condition with All Natural Leather Conditioner (1oz) and Protect with Leather Protector (2oz).

Case of 12 | MADE IN USA



NEW STYLE NO. 98019 CARE KIT #3

Care Kit 3 is designed for waterproof Full Grain or Nubuck leathers that have oil added to them during the tanning process. Clean with Waterproof Leather Cleaner (2oz), Condition with Boot Oil (2oz) and Protect with Leather Protector (2oz).

Case of 12 | MADE IN USA



NEW STYLE NO. 98020 CARE KIT #4

Care Kit 4 is designed for waterproof Full Grain or Nubuck leathers that have wax added to them during the tanning process. Clean with Waterproof Leather Cleaner (2oz), Condition with Mink Oil (1oz) and Protect with Leather Protector (2oz).

Case of 12 | MADE IN USA



NEW STYLE NO. 98021 CARE KIT #5

Care Kit 5 is designed for Full Grain, Nubuck or Smooth Finish leathers with no added wax or oil during the tanning process. This kit is also recommended for all non-waterproof cement construction footwear. Clean with Foam Cleaner (2oz), Condition with Leather Cream (1oz) and Protect with Leather Protector (2oz).

Case of 12 | MADE IN USA



NEW STYLE NO. 98022 CARE KIT #6

Care Kit 6 is designed for waterproof Full Grain, Nubuck or Smooth Finish leathers with no added wax or oil during the tanning process. This kit is also recommended for all waterproof cement construction footwear. Clean with Waterproof Leather Cleaner (2oz), Condition with Leather Cream (1oz) and Protect with Leather Protector (2oz).

Case of 12 | MADE IN USA



RECOMMENDED CARE KIT PRODUCTS

CARE KIT NO.	CLEAN	CONDITION	PROTECT
1	Foam Cleaner	All Natural Boot Oil or Boot Oil	Leather Protector
2	Foam Cleaner	All Natural Leather Conditioner or Mink Oil	Leather Protector
3	Waterproof Cleaner	Boot Oil	Leather Protector
4	Waterproof Cleaner	Mink Oil	Leather Protector
5	Foam Cleaner	Leather Cream or Boot Cream	Leather Protector
6	Waterproof Cleaner	Leather Cream	Leather Protector
7	Roughout/Nubuck Cleaner Kit	N/A	Leather Protector

STYLE CARE KIT CHART

STYLE NO.	KIT NO.	STYLE NO.	KIT NO.	STYLE NO.	KIT NO.
2412	6	3520	4	3561	7
2414	6	3522	4	3562	5
2416	4	3530	6	3566	5
2452	6	3531	4	3572	6
2455	6	3532	4	3573	6
3259	N/A	3534	6	5906	2
3260	N/A	3537	4	5908	2
3504	6	3541	6	5918	1
3505	1	3542	6	5923	5
3506	6	3548	6	83216	6
3507	6	3552	4	83218	6
3508	6	3554	6	83602	6
3512	4	3555	6	83660	6
3513	4	3556	5	83842	6
3516	4	3557	5	83856	6
3517	4	3558	5	83864	6
3519	4	3559	5	83866	6

RED WING CSA STYLES

CEMENT

NEW

3558
Men's
Pg. 4

AT PR EH

NEW

3559
Men's
Pg. 4

AT PR EH

NEW

3556
Men's
Pg. 5

AT PR EH

NEW

3557
Men's
Pg. 5

AT PR EH

NEW

3562
Women's
Pg. 5

AT PR EH

ZERO-G LITE

NEW

3566
Women's
Pg. 5

AT PR EH

NEW

2452
Men's
Pg. 6

AT PR EH

2455
Men's
Pg. 6

AT PR EH

3541
Men's
Pg. 7

ST PR EH

3561
Men's
Pg. 7

ST PR EH

ZERO-G LITE

EXOS LITE

TRUHIKER

NEW

3259
Men's
Pg. 8

NT PR EH

NEW

3260
Men's
Pg. 8

NT PR EH

3519
Men's
Pg. 9

NT PR EH

3532
Men's
Pg. 9

NT PR EH

3531
Men's
Pg. 10

NT PR EH

SHIELDLITE ATHLETICS

TRADESMAN

NEW

3542
Women's
Pg. 11

NT PR EH

3513
Men's
Pg. 12

NT PR EH

3552
Men's
Pg. 12

NT PR EH

3516
Men's
Pg. 12

NT PR MT EH

3506
Men's
Pg. 13

NT PR EH

TRADESWOMAN

KING TOE® ADC

KING TOE®

ST Steel Toe
Embout en acierAT Aluminum Toe
Embout en aluminiumNT Non-Metallic Toe
Embout non métalliqueWaterproof
ImperméableInsulated
Isolé

RED WING CSA STYLES

DIRECT ATTACH



3548
Men's
Pg. 13

NT PR EH



3530
Men's
Pg. 14

NT PR MT EH



3512
Men's
Pg. 14

NT PR EH

KING TOE®



NEW
3517
Men's
Pg. 15

NT PR EH



NEW
3520
Men's
Pg. 15

NT PR EH



NEW
3572
Men's
Pg. 16

NT PR EH



NEW
3534
Men's
Pg. 16

NT PR MT EH



NEW
3573
Men's
Pg. 17

NT PR EH

BURNSIDE

BRNR XP



NEW
3555
Men's
Pg. 17

NT PR EH



NEW
3554
Women's
Pg. 17

NT PR EH



3504
Men's
Pg. 18

ST PR EH



3507
Men's
Pg. 18

ST PR EH



2412
Men's
Pg. 18

ST PR EH

BRNR XP

SUPERSOLE® 2.0



2416
Men's
Pg. 19

ST PR EH



2414
Men's
Pg. 19

ST PR EH



3508
Men's
Pg. 19

ST PR EH



3505
Men's
Pg. 19

ST PR EH

SUPERSOLE® 2.0

CSA FULL LINE

RED WING

WORK

IRISH SETTER

PR Puncture Resistant
Résistant aux perforations

MT Metatarsal Guard
Protège les métatarses

EH Electrical Hazard
Risque électrique

sales@foxcanada.net
1.866.548.8147
www.foxcanada.net

RED WING / WORX / IRISH SETTER CSA STYLES

CSA FULL LINE

WELT



NEW

3522
Men's
Pg. 20



NEW

3537
Men's
Pg. 20



TRACTION TRED LITE

CEMENT



5923
Men's
Pg. 21



ZINC

WELT



5918
Men's
Pg. 22



TACONITE



5906
Men's
Pg. 22



GRAVEL



5908
Men's
Pg. 22



WELT



83856
Men's
Pg. 23



WINGSHOOTER ST

DIRECT ATTACH



NEW
83660
Men's
Pg. 24



NEW
83864
Men's
Pg. 24



KASOTA



NEW
83866
Men's
Pg. 24



CEMENT TO WELT



83602
Men's
Pg. 25



83842
Men's
Pg. 25



83216
Women's
Pg. 26



83218
Women's
Pg. 26



CROSBY



Steel Toe
Embout en acier



Aluminum Toe
Embout en aluminium



Non-Metallic Toe
Embout non métallique



Waterproof
Imperméable



Insulated
Isolé

TECHNICAL SPECIFICATIONS

DEVELOPING PURPOSE-BUILT WORK BOOTS FOR SUPERIOR PERFORMANCE AND PROTECTION.

Red Wing work footwear brands are renowned for using leading-edge technologies that ensure premium performance for the life of the product. These technologies ensure comfortable protection for modern craftsmen.



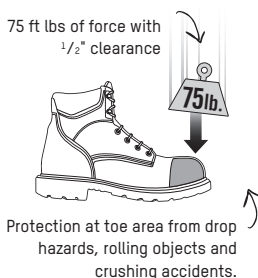
RED WING'S TESTING LAB PROVIDES AMPLE SUPPORT FOR PROVING TECHNOLOGY.

Each and every day, the talented team of technicians completes tests to ensure product strength and durability. The new lab gathers all of our testing equipment into one area while enabling current expansion with new testing equipment for footwear.

Lab Manager Lori Hyllengren's vast experience and dedication to quality testing is known throughout the industry and around the globe. The involvement of Lori and her team allows us to remain leaders in our industry, giving us insight into and a voice in the creation and update of industry standards.



TOE PROTECTION Heavy falling or dropped objects and vehicles in motion are work hazards your customers face every day. In many cases, employers require protective footwear; in other cases, it just makes good sense. Red Wing has three types of toe caps to choose from. All of Red Wing's safety toe footwear meets ASTM F2413-18, I/C standards for impact and compression.



Protection at toe area from drop hazards, rolling objects and crushing accidents.



ST Steel Toe: Made of one of the most durable and dependable materials on earth, steel toe caps provide ultimate protection for the most hazardous environments.



NANO non-metallic toe

NT Non-Metallic Toe: Made from varying combinations of nylon, plastic, and fiberglass, this toe cap provides the protection of a steel toe cap without the inconvenience of tripping metal detectors.

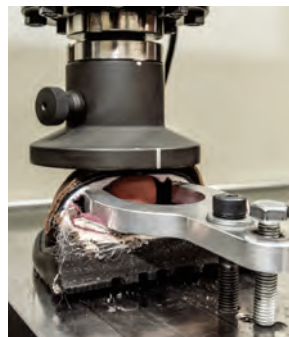


AT Aluminum Toe: Made from aluminum material, these caps are 31% lighter than steel while still meeting the same safety standards.



TESTING: Impact Resistance tests the shoe's capacity to protect the toe area of the foot against falling objects. For Impact testing, a weight is dropped onto the protective toe cap area of the footwear. The clearance remaining inside the cap after impact is then determined. Each standard identifies the atmospheric conditions of the test, the shape of the striker, the amount of weight and distance from which the weight must be dropped, the velocity of the drop and the impact energy delivered.

Left: The weight is dropped onto the protective toe cap area.



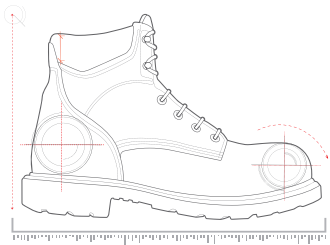
TESTING: Compression Resistance tests the shoe's capacity to protect the toe area of the foot against heavy rolling objects. For Compression testing, the toe cap area of the footwear is compressed between parallel platens at a given rate of speed until the required compressive force is reached. The clearance remaining inside the cap after the compression is then determined.

Left: The toe cap is being compressed between the parallel platens.

FOOTWEAR TECHNICAL SPECIFICATIONS

DEVELOPING PURPOSE-BUILT WORK BOOTS TO PROTECT WORKERS

All of our footwear brands are renowned for leading-edge technologies that ensure premium performance for the life of the product. These technologies deliver comfortable protection for modern craftsmen.



UPPER TECHNOLOGY



RW LEATHER

Handcrafted leather from S.B. Foot Tanning Co.

Starting with hides from U.S. raised cattle with minimal surface imperfections, we control every step of the process, using time-honored techniques to craft leather with natural beauty and unmatched durability.



GOODHUE LEATHER

Consistent, durable leather from S.B. Foot Tanning Co.

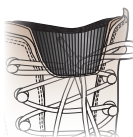
Handcrafted, full grain leather manufactured by our S.B. Foot Tanning Company in Red Wing, Minnesota. Goodhue Leather is crafted using time-proven techniques, to yield the right color, consistency and durability.



CUSHIN™

Comfort tongue technology.

Minimizes pressure some workers feel on their shin or ankle from the top of the boot tongue. A four-way stretch nylon offers relief and flexibility while walking, and an internal padded waffle mesh maintains premium comfort.



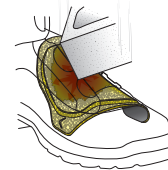
Minimizes pressure on shin.



FORCESHIELD™

Flexible impact absorption.

A revolutionary thin, soft material that offers amazing impact absorption yet it is flexible and comfortable. ForceShield™ provides protection from dangerous workplace drop and impact hazards while meeting ASTM standards.



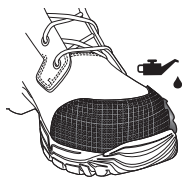
Force from impact is dissipated.



FORCEGUARD™

Added protection for durability.

This technology is a protective covering that provides long-wearing abrasion, oil and chemical resistance on critical areas of the boot.



Rubber covering for durability.



SCREENSHIELD

Lightweight abrasion resistance.

A thin but highly durable coating for the toe and other high-wear areas of a work boot that enhances durability with minimal weight.



Thin coating provides durability.



ARMATEC™

Toe and heel durability protection.

This technology is a protective covering that is incredibly tough and abrasion resistant. Placement of ArmaTec™ in high wear areas helps preserve and lengthen the life of a boot.



SWITCHBACK SUPPORT SYSTEM

Less weight, superior performance.

Built with an integrated TPU-cord construction, this next-generation upper design approach incorporates an innovative "switchback" technique. The end result is greatly reduced weight without sacrificing support, comfort or durability.



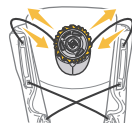
Lightweight TPU-cord provides support and durability.



BOA® Fit System:

Dial in to fast, effortless, precision fit.

Dial in to fast, effortless, precision fit with the BOA® Fit System, built for all-day performance in any environment. Push in to engage the system, turn the dial to micro-adjust to a custom, precision fit, and pull up for fast release.



Quick on and off convenience.



WOMEN'S FIT

Better fit in our women's footwear.

Our women's specific styles are built around precision-made lasts that address the nuances of a woman's foot shape for better fit and performance.



Footwear made on a women's last.



KING TOE®

More toe room.

Larger toe box provides 44% more toe room and comfort than our standard work boots.



44% more toe room.



PERSPAIR®

Adds lightness and strength to the upper.

Perspair® is an innovative, cut-resistant textile made by Lenzi®. This lightweight, yet durable, woven material offers high abrasion resistance and excellent moisture wicking.



LINING TECHNOLOGY



RED WING WATERPROOF

3-layers for waterproof protection

This system uses a 3-layer approach to keep feet dry. 1 - Linings help move moisture away from the foot to keep it dry. 2 - Foam provides cushioning and a comfortable fit. 3 - A waterproof bootie is a barrier to keep water out. Tricot, a protective material, is applied to the outside of the bootie to ensure a complete waterproof system.



Perspiration moves away from the foot while water stays out



GORE-TEX WATERPROOF MEMBRANE

Prevents water getting in, while perspiration moves out

Red Wing uses GORE-TEX for the ultimate in comfort and protection. The GORE-TEX membrane blocks moisture from the outside, while allowing moisture inside to evaporate. GORE-TEX has over 9 billion pores per square inch that prevent water from getting to your feet while allowing sweat vapor to pass right through, keeping your feet dry and comfortable in all conditions.



ULTRADRY™ WATERPROOF

Irish Setter exclusive waterproof system

Irish Setter UltraDry™ construction combines a moisture management lining with waterproof components for dry, long-lasting comfort and performance.



3M™ THINSULATE™ ULTRA INSULATION

The ultimate insulation for long hours

The ultimate insulation for cold weather boots, 3M™ Thinsulate™ Ultra Insulation is thin, warm and lightweight, with the durability to withstand long hours of hard wear and keep feet warm even in damp conditions.



COSMOCOMFORT

Keeps feet warm, dry and comfortable

This technology provides the equivalent of 400 grams of insulation without the weight, thickness or bulk. A revolutionary manufacturing process transfers aluminum from a solid to a gas and back to a solid again, producing an extremely lightweight and paper-thin material with superior insulation, waterproofing and windproofing properties, plus exceptional breathability.



BLOOD-BORNE PATHOGEN PROTECTION

Provides resistance to penetration of blood-borne pathogens

Incorporates a waterproof membrane that is highly breathable. In addition, the membrane has been shown to provide resistance to penetration of blood-borne pathogens per ASTM F1671. However, no product offers total protection. In spite of the high quality standards to which this footwear and the membrane are produced, the barrier properties can be compromised by many factors, including wear, tears, delamination, sewing or imperfect seams.

Under no circumstances will Red Wing Shoe Company, Inc., or the manufacturer of the membrane, be responsible for damages arising from the use of this product.



INSOLE TECHNOLOGY



STABLEFLEX

Flexible forefoot, stable heel

This technology combines increased flexibility in the forefoot with a stable platform in the heel. Our superior dual-construction process incorporates a welted heel for extra stability, with cement construction in the forefoot for added flexibility and a comfortable fit.



Flexibility



SWEN-FLEX®

Non-metallic, puncture-resistant insoles

These non-metallic, puncture-resistant insoles are manufactured from high-strength, woven fibres. They meet or exceed all world standards for puncture resistance, including CSA, ASTM and EN.



L-PROTECTION®

Non-metallic, puncture-resistant insoles

These insoles provide maximum protection from foot injuries due to sole puncture. Made of multiple layers of high tenacity fibres, pre-treated with a special ceramic, these non-metallic textile inserts are lightweight, flexible, highly comfortable, thermal insulated and non-detectable by metal devices (in products made with appropriate toe protection).



COMFORTFORCE®

Removable footbed

This removable footbed features unique Venturi air perforations to help keep feet cool and dry all day. The special weave pattern helps channel the energy caused by walking, and the arch is curved to add extra comfort.



Provides extra comfort



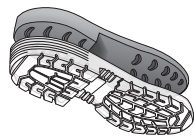
OUTSOLE TECHNOLOGY



SUPERSOLE® 2.0

Comfort inside. Durable outside.

Dual density urethane sole designed with inner sole to provide cushion and comfort, and outer sole to provide durability and protection. This premium sole not only provides top performance in traction, abrasion resistance, cut resistance, oil and chemical resistance, but also delivers maximum comfort.



Top performing premium sole



HEAT-RESISTANT OUTSOLES

Performance on hot surfaces

Soles that have been designed and tested to perform on high heat surfaces. Soles identified as HRO are heat resistant to melting at a minimum of 475° Fahrenheit.



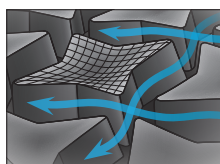
Durable sole resists melting



STARGRIP®

Great outsole slip protection

On oily/wet floors, the greater the floor surface contact, the better the grip. The unique, 8-sided and concave shape of each star pad functions like a mini suction cup, adding grip to every step. Meanwhile, the individual star pads create multiple channels for pushing wet materials out and away from the sole. This combined functionality allows the sole to grip to the floor instead of slipping.



Channels help route wet materials for improved traction



VIBRAM®

Versatile, performance outsoles

Exceptional design intersects with innovative rubber compounds to create versatile, performance outsoles. Vibram® outsoles offer excellent traction and high abrasion resistance in a multitude of environments.



Vibram® Sole



ENERG

Provides energy return with every step

The dual density midsole layers materials for full-length support, with ENERG high-rebound PU. The rubber outsole adds protection on uneven terrain.



Multi-layered midsole/outsole with ENERG



VIBRAM® LITEBASE SOLE COMPOUND

Reduces weight but maintains performance.

This advanced technology reduces rubber thickness by up to 50% while keeping the lug configuration unchanged. The end result is an extremely lightweight sole with no tradeoffs in traction, durability or wear resistance.



Vibram® X-Treme Lite Sole



EXTRALIGHT® SOLE COMPOUND

Performance without the weight.

Made with a special blown EVA compound, ExtraLight® technology produces an incredibly lightweight and durable outsole that provides excellent compression qualities, is highly slip resistant, and offers best-in-class oil and chemical resistance.



X-Lite Sole

ICON REFERENCE



STEEL TOE:
Tempered steel toe caps.



ALUMINUM TOE:
Durable, aluminum toe caps are 31% lighter than steel.



NON-METALLIC TOE:
Non-metallic toe caps designed for metal sensitive areas.

All safety toe footwear manufactured after 10/1/18 meet the ASTM F2413-18, I/C standards for impact and compression.



WATERPROOF:
Boot construction that keeps feet dry in wet conditions.



INSULATED:
Layers of insulating components provide warmth.



PUNCTURE RESISTANT:
Non-metallic or steel midsole reduces foot injuries due to sole puncture.



METATARSAL GUARD:
Equipped with a guard that protects the metatarsal area and toes from falling objects.



ELECTRICAL HAZARD:
Extra protection from accidental contact with electrically energized objects.

All protection methods meet ASTM F2413-18 standards.

CLASSIFICATION



Green triangle indicates sole puncture protection with a Grade 1 protective toe cap.

CSA GRADE 1

Canadian Standards Association approval.

Refers to the Canadian Standards Association's (CSA) approval (CAN/CSA-Z195-14) for protective footwear.



Blue rectangle indicates a Grade 1 protective toe cap without puncture resistant sole.

CSA GRADE 1

PROTECTIVE TOE LABEL

Canadian Standards Association approval.

Refers to the Canadian Standards Association's (CSA) approval (CAN/CSA-Z195-14) for protective footwear. (protective toe only)

SELLING PROGRAMS



CORE STYLE

To increase the service level on our best performing shoe styles, the Core Style initiative means higher in-stocks, greater inventory levels and better service response time to ensure customer satisfaction. The best-selling styles are labeled "Core Style" in the catalog. Please reference these styles when placing your orders.

FOOTWEAR SIZE COMPARISON CHART FOR MOST COMMON INTERNATIONAL SYSTEMS

Please note that there is no real standard for converting shoes.

Your best option is to have your foot measured professionally at a local shoe store and get the Men's and Women's sizes directly from the measurement device.

USA Men's			3.5	4	4.5	5	5.5	6	6.5	7	7.5	8	8.5	9	9.5	10	10.5	11	11.5	12	13	14	15	16
USA Women's	4	4.5	5	5.5	6	6.5	7	7.5	8	8.5	9	9.5	10	10.5	11	12								
European	33.5	34	34.5	35	36	37	37.5	38	38.5	39	40	41	41.5	42	42.5	43	43.5	44	45	46	47	48	49	50
British	1.5	2	2.5	3	3.5	4	4.5	5	5.5	6	6.5	7	7.5	8	8.5	9	9.5	10	10.5	11	12	13	14	15
cm Men's			21.5	22	22.5	23	23.5	24	24.5	25	25.5	26	26.5	27	27.5	28	28.5	29	29.5	30	31	32	33	34
cm Women's	21	21.5	22	22.5	23	23.5	24	24.5	25	25.5	26	26.5	27	27.5	28	28.5								



ORDERING INFORMATION

RED WING SHOES®

**30 DAY
UNCONDITIONAL
COMFORT GUARANTEE**

If during the first thirty (30) days immediately following your purchase you are not satisfied with the comfort of your Red Wing branded work footwear for whatever reason, Red Wing will exchange or refund the purchase price to you, no questions asked, provided you still have your dated receipt of purchase. No adjustment will be given without the original receipt of purchase. You must return your footwear to the Red Wing Shoe dealer from which the footwear was purchased. Limit one return per purchase. This guarantee does not apply to WORX, Red Wing Heritage, Irish Setter or Vasque branded footwear.

RED WING DISTRIBUTION POLICY

It is the policy of Red Wing Shoe Company, Inc. to sell its Red Wing branded products directly to selected retailers for resale at their approved outlets and only to end user customers. This policy prohibits a retailer from mailing Red Wing branded footwear to any customer who has not previously been fitted in a pair of Red Wing shoes at the retailer's approved outlet. This policy prohibits the on-line sales of Red Wing branded work footwear. This policy also prohibits resale or shipment of Red Wing branded products by a retailer to any other business or location, whether domestic or international that is not an authorized Red Wing branded account. Violation of this distribution policy may result in termination of a retailer's right to sell Red Wing branded products.

PRODUCT WARRANTIES

LIMITED WARRANTY RELATING TO RED WING BRANDED FOOTWEAR:

Footwear products bearing the "Red Wing" or "Red Wing Shoes" label are warranted against defects in workmanship and materials. If within 12 months of purchase from an authorized seller, a defect occurs in a Red Wing branded footwear product as the result of normal use, Red Wing will repair the defect or exchange the product. Product failures caused by excessive or abusive wear conditions do not qualify for exchange or purchase credit. This warranty is available only to the original purchaser and is not transferable. No adjustment will be given without the original receipt of purchase from an authorized seller. You must return your footwear to the Red Wing Shoe seller from which the footwear was purchased.

This limited product warranty gives you specific legal rights, and you may also have other rights that vary from province to province. Any implied warranties shall be effective for a period not exceeding 12 months from the date of purchase from an authorized seller. Some provinces do not allow manufacturers to impose time limitations on certain implied warranties, so the above limitation may not apply to you.

LIMITED WARRANTY RELATING TO IRISH SETTER FOOTWEAR:

This warranty is available only to the original purchaser and is not transferable. No adjustment will be given without the original receipt of purchase from an authorized seller. You must return your footwear to the Irish Setter seller from which the footwear was purchased.

Irish Setter Work branded footwear products are warranted against defects in workmanship and materials. If within 6 months of purchase from an authorized seller, a defect occurs in an Irish Setter Work branded footwear product as the result of normal use, Red Wing Shoe Company, Inc. ("Red Wing") will repair the defect or exchange the product. Product failures caused by excessive or abusive wear conditions do not qualify for exchange or purchase credit.

Irish Setter Hunt branded footwear products are warranted against defects in workmanship and materials. If within 12 months of purchase from an authorized seller, a defect occurs in an Irish Setter Hunt branded footwear product as the result of normal use, Red Wing Shoe Company, Inc. ("Red Wing") will repair the defect or exchange the product. Product failures caused by excessive or abusive wear conditions, or if worn for occupational purposes, do not qualify for exchange or purchase credit.

CHANGE NOTICE

We have made every effort to make this catalog accurate. Due to improvement of product performance and availability of materials, there may be specification changes made during the year. Red Wing Shoe Company, Inc. reserves the right to discontinue or drop products, sizes, widths or styles without prior notice. Policies, specifications and designs are subject to change without notice. For current warranty information, including return policies, please visit our website at: redwingshoes.com/red-wing-shoes-warranty

This limited product warranty gives you specific legal rights, and you may also have other rights that vary from province to province. Any implied warranties shall be effective for a period not exceeding 6 months from the date of purchase from an authorized seller. Some provinces do not allow manufacturers to impose time limitations on certain implied warranties, so the above limitation may not apply to you.

LIMITED WARRANTY RELATING TO WORX FOOTWEAR:

WORX branded footwear products are warranted against defects in workmanship and materials. If within 6 months of purchase from an authorized seller, a defect occurs in a WORX branded footwear product as the result of normal use, Red Wing Shoe Company, Inc. ("Red Wing") will repair the defect or exchange the product. Product failures caused by excessive or abusive wear conditions do not qualify for exchange or purchase credit. This warranty is available only to the original purchaser and is not transferable. No adjustment will be given without the original receipt of purchase from an authorized seller. You must return your footwear to the WORX seller from which the footwear was purchased.

This limited product warranty gives you specific legal rights, and you may also have other rights that vary from province to province. Any implied warranties shall be effective for a period not exceeding 6 months from the date of purchase from an authorized seller. Some provinces do not allow manufacturers to impose time limitations on certain implied warranties, so the above limitation may not apply to you.

DISCLAIMER: The limited warranty relating to Red Wing, Irish Setter and WORX branded footwear is in lieu of any other express warranty. No agent, employee or representative of Red Wing has any authority to bind Red Wing to any affirmation, representation or warranty concerning Red Wing, Irish Setter and WORX branded footwear products, except as stated herein. Red Wing shall not be liable for any consequential, incidental or punitive damages.

Red Wing Shoe Company, Inc. in Red Wing, MN and the plant facility in Potosi, MO are ISO Quality Management System certified.

FOR ORDERING INFORMATION AND QUESTIONS CALL:

Toll-Free:

1-800-328-9453

For all International Customers outside
the United States and Canada:

Phone: 651-388-8211

Canada.orders@redwingshoes.com

TERMS & CONDITIONS

1% 30 days. Net 60 days. 12% annual interest on
past due accounts (1% per month). Prices are ex-
works Red Wing, MN USA and are subject to change
without notice. All prices are shown in Canadian
dollars. Men's shoes are not available in ½ sizes
over 12. Women's shoes are not available in ½ sizes
over 11.

OUR SALES MANAGERS ARE READY TO SERVE YOU:

CONTACT INFORMATION

- A. **DANIEL BERNIER**
(514) 995-3878 (phone)
danbern@videotron.ca
- B. **JIM CHADWICK***
(250) 494-7958 (phone)
jim.chadwick@redwingshoes.com
- C. **EMILE CORMIER**
(506) 386-1018 (phone)
cormier.emile@bellaliant.net
- D. **AT-WORK SALES**
MARK KRAUSEWITZ • GREG ROSE
(905) 617-2744 (phone)
mark@at-work.com

- E. **CURTIS PAULL**
(204) 952-1969 (phone)
curtispaull@me.com
- F. **PAUL SULLIVAN**
(403) 990-4899 (phone)
paul.sullivan@redwingshoes.com
- *Jim is retiring 6/1/21



PRODUCT INDEX

STYLE #	Prod Pg	Care Kit	ST	AT	NT	PR	MT	EH
2412	18	6	•		•	•	•	•
2414	19	6	•		•	•	•	•
2416	19	6	•		•	•	•	•
2452	6	6		•	•	•	•	•
2455	6	6		•	•	•	•	•
3259	8	N/A		•	•	•	•	•
3260	8	N/A		•	•	•	•	•
3504	18	6	•		•	•	•	•
3505	19	1	•		•	•	•	•
3506	13	6		•	•	•	•	•
3507	18	6	•		•	•	•	•
3508	19	6	•		•	•	•	•
3512	14	4		•	•	•	•	•
3513	12	4		•	•	•	•	•
3516	12	4		•	•	•	•	•
3517	15	4		•	•	•	•	•
3519	9	4		•	•	•	•	•
3520	15	4		•	•	•	•	•
3522	20	4		•	•	•	•	•
3530	14	6		•	•	•	•	•
3531	10	4		•	•	•	•	•
3532	9	4		•	•	•	•	•
3534	16	6		•	•	•	•	•
3537	20	4		•	•	•	•	•
3541	7	6	•		•	•	•	•
3542	11	6		•	•	•	•	•

STYLE #	Prod Pg	Care Kit	ST	AT	NT	PR	MT	EH
3548	13	6		•	•	•	•	•
3552	12	4		•	•	•	•	•
3554	17	6		•	•	•	•	•
3555	17	6		•	•	•	•	•
3556	5	5	•		•	•	•	•
3557	5	5	•		•	•	•	•
3558	4	5	•		•	•	•	•
3559	4	5	•		•	•	•	•
3561	7	7	•		•	•	•	•
3562	5	5	•		•	•	•	•
3566	5	5	•		•	•	•	•
3572	16	6		•	•	•	•	•
3573	17	6		•	•	•	•	•
5906	22	2	•		•	•	•	•
5908	22	2	•		•	•	•	•
5918	22	1	•		•	•	•	•
5923	21	5		•	•	•	•	•
83216	26	6		•	•	•	•	•
83218	26	6		•	•	•	•	•
83602	25	6		•	•	•	•	•
83660	24	6		•	•	•	•	•
83842	25	6		•	•	•	•	•
83856	23	6		•	•	•	•	•
83864	24	6		•	•	•	•	•
83866	24	6		•	•	•	•	•

RED STYLE # = NEW STYLES

sales@foxcanada.net
1.866.548.8147
www.foxcanada.net



2021 CSA CATALOG

sales@foxcanada.net | 1.866.548.8147

www.foxcanada.net